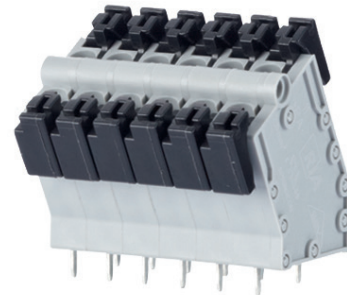
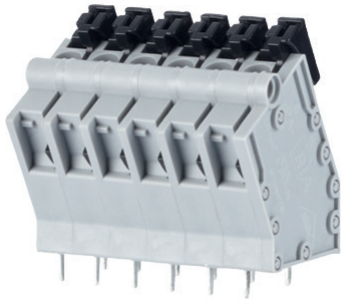


### SPRING CLAMP TERMINAL BLOCKS, SOLDERABLE, 5.08mm PITCH

### SPRING CLAMP TERMINAL BLOCKS, SOLDERABLE, 5.08mm PITCH



Product family Pole size Color Option  
**ST176xxLDNN**\*(AST176)  
 Centerline Design Function \*old product name

- spring clamp terminal block, solderable, double solder pins
- centerline 5.08 mm, direction of connection 60°
- color gray
- push-button

#### Technical data



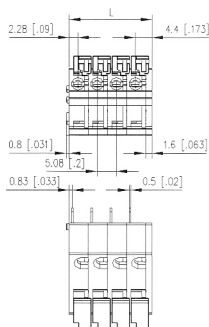
V / A / AWG 300 / 15 / 28 - 12



1 mm<sup>2</sup> 250 V / 13.5 A / T60

Overvoltage category	III	III	II
Pollution degree	3	2	2
Rated voltage	320 V	800 V	800 V
Rated test voltage	4 kV	4.0 kV	4 kV
Insulating material class	CTI 600		
Rated wiring solid wire	0.08 - 2.5 mm <sup>2</sup>		
Rated wiring stranded wire	0.08 - 2.5 mm <sup>2</sup>		
Rated wiring solid wire	AWG 28 - 12		
Rated wiring stranded wire	AWG 28 - 12		
Clearance and creepage distances	4.5 mm		
Solder pin dimension	2 x 0.5 x 1.0 mm		
Recommended pc board hole dia.	ø 1.4 mm		
Solder pin length	4 mm		
Protection category according to IEC 60529	IP 20		
Min. insul. strip length	15 mm		
Color	gray		

#### Dimensional drawing



L = (Pole size - 1) \* centerline + 6.68 mm (0.263 in.)

P/N

ST176XXLDNN

Complete the part number by adding the pole size.

02	03	04	05	06	07	08
09	10	11	12	13	14	15
16	17	18	19	20	21	22
23	24					



Product family Pole size Color Option  
**ST186xxLDNN**\*(AST186)  
 Centerline Design Function \*old product name

- spring clamp terminal block, solderable, double solder pins
- centerline 5.08 mm, direction of connection 60°
- color gray
- push-button, double solder pins

#### Technical data



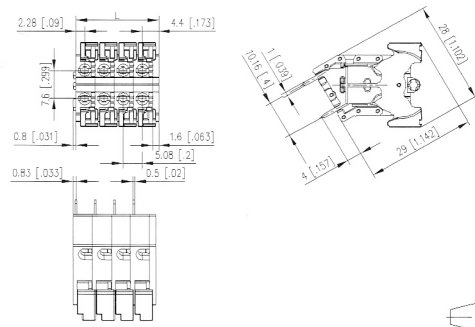
V / A / AWG 300 / 15 / 28 - 12



1 mm<sup>2</sup> 250 V / 13.5 A / T60

Overvoltage category	III	III	II
Pollution degree	3	2	2
Rated voltage	320 V	800 V	800 V
Rated test voltage	4 kV	4.0 kV	4 kV
Insulating material class	CTI 600		
Rated wiring solid wire	0.08 - 2.5 mm <sup>2</sup>		
Rated wiring stranded wire	0.08 - 2.5 mm <sup>2</sup>		
Rated wiring solid wire	AWG 28 - 12		
Rated wiring stranded wire	AWG 28 - 12		
Clearance and creepage distances	4.5 mm		
Solder pin dimension	2 x 0.5 x 1.0 mm		
Recommended pc board hole dia.	ø 1.4 mm		
Solder pin length	4 mm		
Protection category according to IEC 60529	IP 20		
Min. insul. strip length	15 mm		
Color	gray		

#### Dimensional drawing



L = (Pole size - 1) \* centerline + 6.68 mm (0.263 in.)

P/N

ST186XXLDNN

Complete the part number by adding the pole size.

02	03	04	05	06	07	08
09	10	11	12	13	14	15
16	17	18	19	20	21	22
23	24					