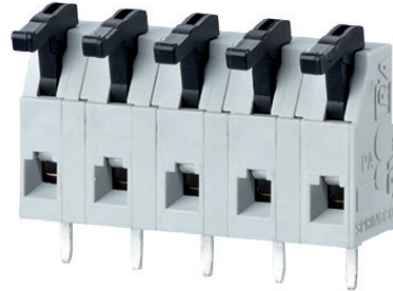
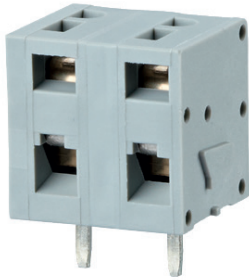


## SPRING CLAMP TERMINAL BLOCKS, SOLDERABLE, 7.50mm PITCH

## SPRING CLAMP TERMINAL BLOCKS, SOLDERABLE, 7.50mm PITCH



Product family Pole size Color Option  
**ST067xxHDNN**\*(AST067)  
 Centerline Design Function \*old product name

- spring clamp terminal block, solderable
- centerline 7.50 mm, direction of connection 90°
- color gray
- without eccentric lever

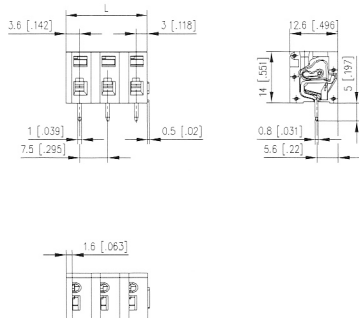
### Technical data

cULus V / A / AWG 600 / 13 / 28 - 14

SEV 1 mm<sup>2</sup> 750 V / 13.5 A / T60

Overvoltage category	III	III	II
Pollution degree	3	2	2
Rated voltage	400 V	800 V	800 V
Rated test voltage	6.0 kV	6 kV	6.0 kV
Insulating material class	CTI 400		
Rated wiring solid wire	0.2 - 2.0 mm <sup>2</sup>		
Rated wiring stranded wire	0.2 - 2.0 mm <sup>2</sup>		
Rated wiring solid wire	AWG 28 - 14		
Rated wiring stranded wire	AWG 28 - 14		
Clearance and creepage distances	6.5 mm		
Solder pin dimension	1.0 x 0.8 mm		
Recommended pc board hole dia.	ø 1.4 mm		
Solder pin length	5 mm		
Protection category according to IEC 60529	IP 20		
Min. insul. strip length	6 mm		
Color	gray		

### Dimensional drawing



L = (Pole size - 1) \* centerline + 6.6 mm (0.260 in.)

P/N

ST067XXHDNN

Complete the part number by adding the pole size.

02	03	04	05	06	07	08
09	10	11	12	13	14	15
16	17	18	19	20	21	22
23	24					



Product family Pole size Color Option  
**ST027xxHDNC**\*(AST027)  
 Centerline Design Function \*old product name

- spring clamp terminal block, solderable
- centerline 7.50 mm, direction of connection 90°
- fittable without loss of poles
- color gray
- eccentric lever

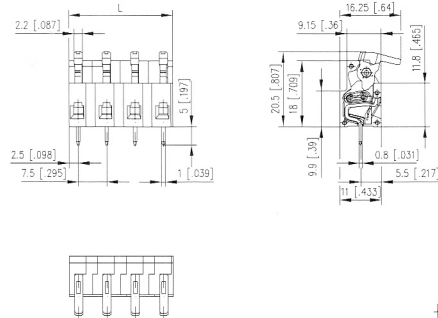
### Technical data

cULus V / A / AWG 300 / 13 / 28 - 14

SEV 1 mm<sup>2</sup> 750 V / 13.5 A / T60

Overvoltage category	III	III	II
Pollution degree	3	2	2
Rated voltage	400 V	800 V	800 V
Rated test voltage	6.0 kV	6 kV	6.0 kV
Insulating material class	CTI 400		
Rated wiring solid wire	0.2 - 2.0 mm <sup>2</sup>		
Rated wiring stranded wire	0.2 - 2.0 mm <sup>2</sup>		
Rated wiring solid wire	AWG 28 - 14		
Rated wiring stranded wire	AWG 28 - 14		
Clearance and creepage distances	6.5 mm		
Solder pin dimension	1.0 x 0.8 mm		
Recommended pc board hole dia.	ø 1.4 mm		
Solder pin length	5 mm		
Protection category according to IEC 60529	IP 20		
Min. insul. strip length	6 mm		
Color	gray		

### Dimensional drawing



L = (Pole size - 1) \* centerline + 5 mm (0.197 in.)

P/N

ST027XXHDNC

Complete the part number by adding the pole size.

02	03	04	05	06	07	08
09	10	11	12	13	14	15
16	17	18	19	20	21	22
23	24					