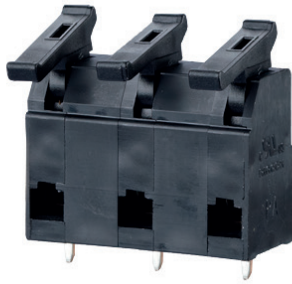


SPRING CLAMP TERMINAL BLOCKS, SOLDERABLE, 10.00mm PITCH

SPRING CLAMP TERMINAL BLOCKS, SOLDERABLE, 10.00mm PITCH



Product family Pole size Color Option
ST059xxHBNC *(AST059)
 Centerline Design Function *old product name

- spring clamp terminal block, solderable
- centerline 10.00 mm, direction of connection 90°
- fittable without loss of poles
- color black
- eccentric lever

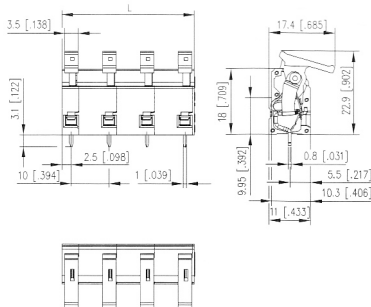
Technical data

c V / A / AWG 600 / 12 / 28 - 12

2.5 mm² 250 V / 10 A / T60

| | | | |
|--------------------------------------------|----------------------------|--------|--------|
| Overvoltage category | III | III | II |
| Pollution degree | 3 | 2 | 2 |
| Rated voltage | 630 V | 1600 V | 1600 V |
| Rated test voltage | 8.0 kV | 8 kV | 8.0 kV |
| Insulating material class | CTI 600 | | |
| Rated wiring solid wire | 0.08 - 2.5 mm ² | | |
| Rated wiring stranded wire | 0.08 - 2.5 mm ² | | |
| Rated wiring solid wire | AWG 28 - 12 | | |
| Rated wiring stranded wire | AWG 28 - 12 | | |
| Clearance and creepage distances | 9 mm | | |
| Solder pin dimension | 1.0 x 0.8 mm | | |
| Recommended pc board hole dia. | ø 1.4 mm | | |
| Solder pin length | 3.1 mm | | |
| Protection category according to IEC 60529 | IP 20 | | |
| Min. insul. strip length | 6 mm | | |
| Color | black | | |

Dimensional drawing



L = (Pole size - 1) * centerline + 5 mm (0.197 in.)

P/N
ST059XXHBNC

Complete the part number by adding the pole size.

| | | | | | | |
|----|----|----|----|----|----|----|
| 02 | 03 | 04 | 05 | 06 | 07 | 08 |
| 09 | 10 | 11 | 12 | | | |



Product family Pole size Color Option
ST139xxDDNC *(AST139)
 Centerline Design Function *old product name

- spring clamp terminal block, solderable
- centerline 10.00 mm, direction of connection 45°
- fittable without loss of poles
- color gray
- eccentric lever

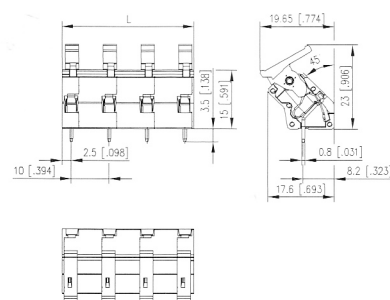
Technical data

c V / A / AWG 300 / 13 / 28 - 14

2.5 mm² 800 V / 24 A / T60

| | | | |
|--------------------------------------------|---------------------------|--------|--------|
| Overvoltage category | III | III | II |
| Pollution degree | 3 | 2 | 2 |
| Rated voltage | 630 V | 1600 V | 1600 V |
| Rated test voltage | 8.0 kV | 8 kV | 8.0 kV |
| Insulating material class | CTI 600 | | |
| Rated wiring solid wire | 0.2 - 2.5 mm ² | | |
| Rated wiring stranded wire | 0.2 - 2.5 mm ² | | |
| Rated wiring solid wire | AWG 28 - 12 | | |
| Rated wiring stranded wire | AWG 28 - 12 | | |
| Clearance and creepage distances | 9 mm | | |
| Solder pin dimension | 0.8 x 1.0 mm | | |
| Recommended pc board hole dia. | ø 1.4 mm | | |
| Solder pin length | 3.5 mm | | |
| Protection category according to IEC 60529 | IP 20 | | |
| Min. insul. strip length | 6 mm | | |
| Color | gray | | |

Dimensional drawing



L = (Pole size - 1) * centerline + 5 mm (0.197 in.)

P/N
ST139XXDDNC

Complete the part number by adding the pole size.

| | | | | | | |
|----|----|----|----|----|----|----|
| 02 | 03 | 04 | 05 | 06 | 07 | 08 |
| 09 | 10 | 11 | 12 | | | |