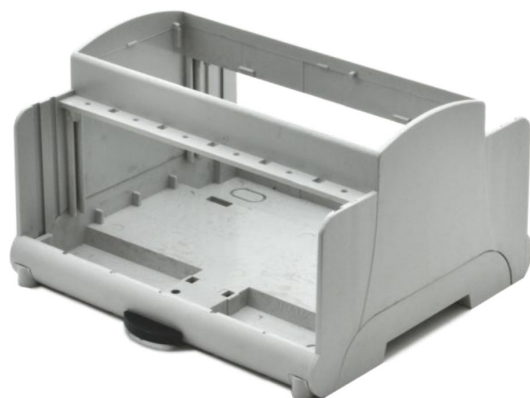


DIN RAIL MODULAR ENCLOSURES

MR6/HDA SERIES & MR6/HDC SERIES 6 MODULE ENCLOSURES



MR6/HDA



MR6/HDC

MR6/HDA

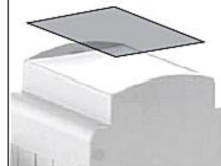
Grigio-Grey



Rosso-Red



Neutro-Clear

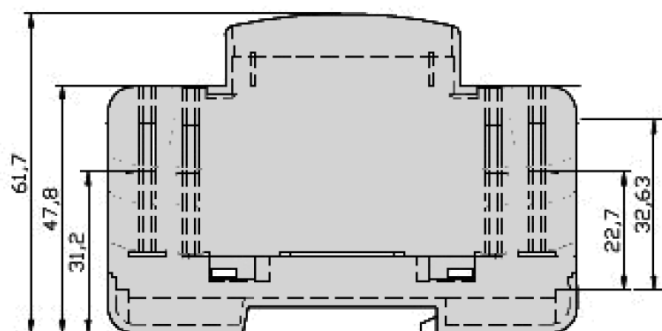


MR6/HDC

fisso-fixed



Dimensions



MR6/HDA – MR6/HDC

Modular Housing, 6 unit, H 53 mm, for mounting on DIN Rail. It is suitable to house two equal electronic boards, at two different levels. Base and cover are snap-on, with the possibility to lock them with screws. Snap-in front panel grey, red or clear (**MR/HDA**) or fixed (**MR/HDC**). The interconnection area can be open or covered with the relevant terminal hooses. Custom drilling on any side, slots). Made in Blend PC/ABS, on request, class UL94V0, in RAL7035 grey. Special colours on request.

Materiale material

BLEND PC/ABS

Colore colour

RAL7035 GREY

units	1	2	3	4	5	6	9	12
width	17.5	35	52.5	70	87.5	105	157.5	210

DIN RAIL MODULAR ENCLOSURES

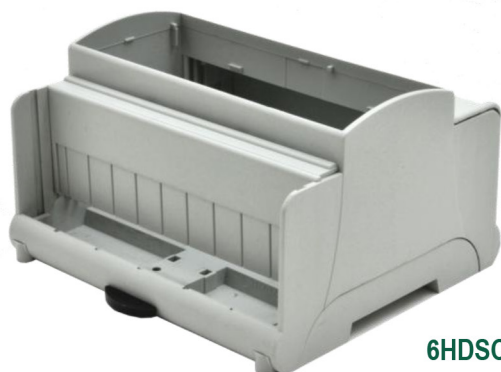
MR6/HDA SERIES & MR6/HDC SERIES 6 MODULE ENCLOSURES



6HDL



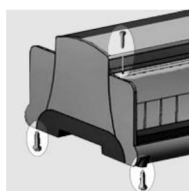
6HDLAR



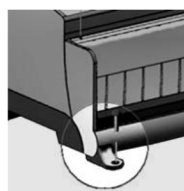
6HDSC



6HDSARC



Base and cover are snap-on, and can be locked by means of self-tapping screws. Terminal covers are snap-on, and can be locked with self-tapping screws.



Up to four external wall-mounting feet can be mounted under the base. In this way the enclosure remains locked, and can be mounted on any wall

Accessories



6HD DS



6HD FA



6HD ML



6HD FC



6HD CL



6HD AL



6HD LC



6HD EIB