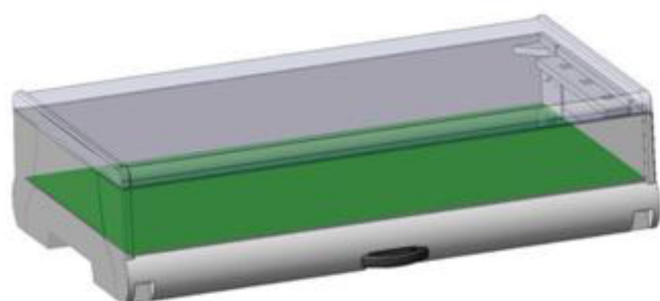


DIN RAIL MODULAR ENCLOSURES

MR9/BMX SERIES, 9 MODULE ENCLOSURE, LOW PROFILE



MR9/BMX

LOW-PROFILE DIN Rail Enclosure,, 9 unit, H 33 mm, for mounting on:

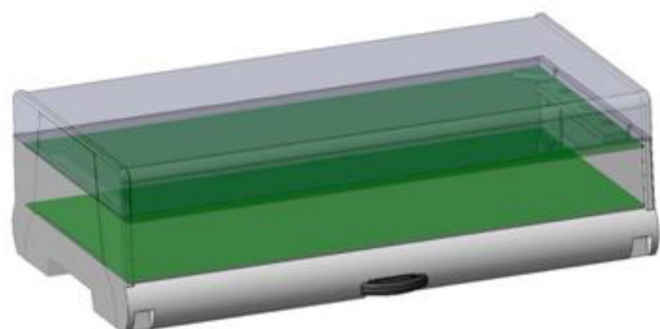
A) Omega Rail acc. to DIN EN 50022

B) Wall

For large Touch-Panel displays and boards at different levels, with increased internal space. Snap-in locking between base and cover. and front panel, **on request custom windowed for a display up to 143mm x 87mm**. Custom drilling on any side. Made in Blend PC/ABS - on request, class UL94V0, in RAL7035 grey. Special colours on request.



MR9/MX..HMX..HHMX SERIES, 9 MODULE ENCLOSURE



MR9/MX..HMX..HHMX

Modular DIN Rail Enclosure,, 9 unit, **48..68..85** mm

A) Omega Rail acc. to DIN EN 50022

B) Wall

For a large Touch-Panel display and several boards at different levels, with increased internal space.

Display up to 143mm x 87mm. Custom drilling on any side (windows, holes, slots). Made in Blend PC/ABS - on request, class UL94V0, in RAL7035 grey. Special colours on request.

TIPO / TYPE	DIMENSIONI/DIMENSIONS
MR9/MX	96X160 H48 mm
MR9/HMX	96X160 H68 mm
MR9/HHMX	96X160 H85 mm

